

PDF Import

User Guide

Contents

1. Copyright Notice	3
2. The PDF Import plug-in	5
3. Opening a PDF file	6
4. High-level information preserved by PDF Import	7
4.1 Layers	7
4.2 Named objects	7
4.3 Inks	7
4.4 Object based screening	7
4.5 Structural Design (CAD) data	7
4.6 Page boxes	8
4.7 Text and fonts	8
4.8 Linework with mixed (DeviceN) colors	8
4.9 Linked images	9
4.9.1 Missing images	9

1. Copyright Notice

© Copyright 2012 Esko Software BVBA, Gent, Belgium

All rights reserved. This material, information and instructions for use contained herein are the property of Esko Software BVBA. The material, information and instructions are provided on an AS IS basis without warranty of any kind. There are no warranties granted or extended by this document. Furthermore Esko Software BVBA does not warrant, guarantee or make any representations regarding the use, or the results of the use of the software or the information contained herein. Esko Software BVBA shall not be liable for any direct, indirect, consequential or incidental damages arising out of the use or inability to use the software or the information contained herein.

The information contained herein is subject to change without notice. Revisions may be issued from time to time to advise of such changes and/or additions.

No part of this document may be reproduced, stored in a data base or retrieval system, or published, in any form or in any way, electronically, mechanically, by print, photoprint, microfilm or any other means without prior written permission from Esko Software BVBA.

This document supersedes all previous dated versions.

PANTONE[®], PantoneLIVE and other Pantone trademarks are the property of Pantone LLC. All other trademarks or registered trademarks are the property of their respective owners. Pantone is a wholly owned subsidiary of X-Rite, Incorporated. © Pantone LLC, 2012. All rights reserved.

This software is based in part on the work of the Independent JPEG Group.

Portions of this software are copyright © 1996-2002 The FreeType Project (www.freetype.org). All rights reserved.

Portions of this software are copyright 2006 Feeling Software, copyright 2005-2006 Autodesk Media Entertainment.

Portions of this software are copyright ©1998-2003 Daniel Veillard. All rights reserved.

Portions of this software are copyright ©1999-2006 The Botan Project. All rights reserved.

Part of the software embedded in this product is gSOAP software. Portions created by gSOAP are Copyright ©2001-2004 Robert A. van Engelen, Genivia inc. All rights reserved.

Portions of this software are copyright ©1998-2008 The OpenSSL Project and ©1995-1998 Eric Young (eay@cryptsoft.com). All rights reserved.

This product includes software developed by the Apache Software Foundation (<http://www.apache.org/>).

Adobe, the Adobe logo, Acrobat, the Acrobat logo, Adobe Creative Suite, Illustrator, InDesign, PDF, Photoshop, PostScript, XMP and the Powered by XMP logo are either registered trademarks or trademarks of Adobe Systems Incorporated in the United States and/or other countries.

Microsoft and the Microsoft logo are registered trademarks of Microsoft Corporation in the United States and other countries.

SolidWorks is a registered trademark of SolidWorks Corporation.

Portions of this software are owned by Spatial Corp. 1986 2003. All Rights Reserved.

JDF and the JDF logo are trademarks of the CIP4 Organisation. Copyright 2001 The International Cooperation for the Integration of Processes in Prepress, Press and Postpress (CIP4). All rights reserved.

The Esko software contains the RSA Data Security, Inc. MD5 Message-Digest Algorithm.

Java and all Java-based trademarks and logos are trademarks or registered trademarks of Sun Microsystems in the U.S. and other countries.

Part of this software uses technology by Best™ Color Technology (EFI). EFI and Bestcolor are registered trademarks of Electronics For Imaging GmbH in the U.S. Patent and Trademark Office.

Contains PowerNest library Copyrighted and Licensed by Alma, 2005 – 2007.

All other product names are trademarks or registered trademarks of their respective owners.

Correspondence regarding this publication should be forwarded to:

Esko Software BVBA

Kortrijksesteenweg 1095

B – 9051 Gent

info.eur@esko.com

2. The PDF Import plug-in

The **PDF Import** plug-in allows opening Esko Normalized PDF files in Adobe Illustrator. Every PDF object or construction that can be present in an Esko Normalized PDF is supported, and no non-native art (also known as foreign art) is created.

In addition to the artwork content, various high-level information or **metadata** is preserved.

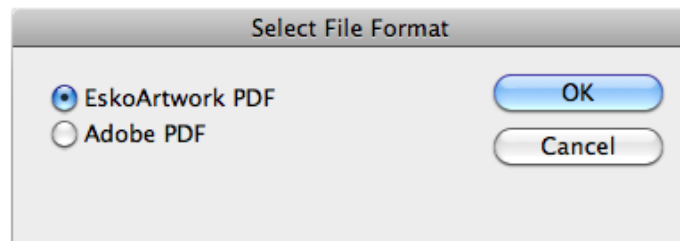
It also improves speed and memory allocation of Adobe Illustrator when a single raster file is linked multiple times into the Illustrator document, even when PDF Import is not directly used to import the document.

Errors and warnings generated during the import are logged to the **Messages** palette.

3. Opening a PDF file

The behavior of the PDF Import plug-in and Illustrator depends on the type of file being opened:

- `.inpdf` : When the file being opened has the suffix `.inpdf`, it is automatically opened by PDF Import.
- `.pdf` with Illustrator data: When the file being opened is an Adobe PDF with preserved Illustrator editability, it is opened as Illustrator document.
- Regular `.pdf` : For all other PDF files, the following dialog is shown. PDF Import is used when the first option (Esko PDF) is chosen. Adobe Illustrator shows this dialog automatically when multiple file import filters support the file being opened.



When the PDF file has multiple pages, the first page is imported and the following warning is logged to the Messages palette: "This document contains more than one page. Only the first page is imported."

4. High-level information preserved by PDF Import

4.1 Layers

All Layer names are preserved, as well as the locked status and the printability flag.

Note:

The Normalized PDF format does not support the hidden/visible flag, therefore all layers (and artwork) present in the PDF file are imported as visible.

4.2 Named objects

For named objects, the names of the artwork are preserved.

4.3 Inks

Esko screenings, ink types, ink books, and ink order as shown in the Ink Manager are preserved.

4.4 Object based screening

Object based Esko screening is preserved and shown in the InkManager. The Screening plug-in is not needed for this functionality.

4.5 Structural Design (CAD) data

The original structural design file is reimported using the Structural Design plug-in that is part of **Esko Data Exchange** .

The original placement origin, rotation angle, front/back side, and printable part selection are preserved. When the structural design file cannot be found, the user is asked to browse for it. When it still can't be found or importing fails, the original Structural Design layer is imported in expanded state and the link to the external file is lost.

4.6 Page boxes

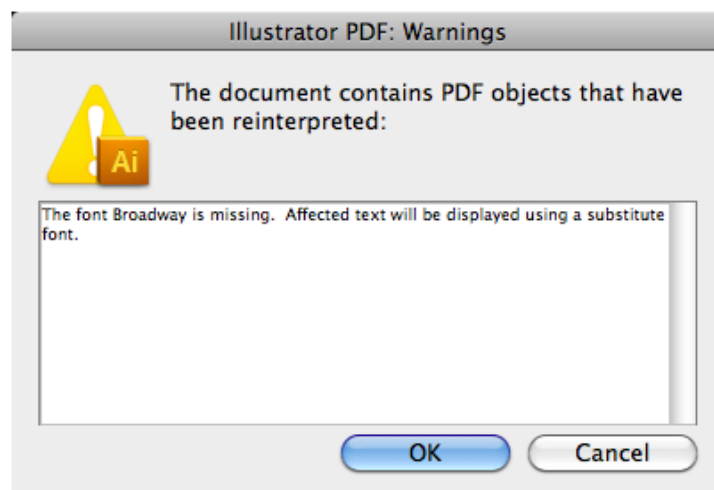
Media Box and Trim Box are imported and shown by the Trim Box and Media Box plug-in.

4.7 Text and fonts

When importing text, only the PDF content is imported. High-level editor-specific features such as styles are not in the PDF, and thus not preserved.

Text paragraphs are not preserved, and in general text lines are not preserved as well, depending on the formatting. It may happen that text is split into several text objects, where each object has a constant font style. In very rare circumstances, when it is not possible to determine the encoding, the text is contoured.

Any font available to Illustrator can be used without any limitations. When a font not available to Illustrator is used, a substitution is used. However, the original font name is preserved in the Illustrator document. Illustrator gives the following warning in such cases:



When such a document is saved and reopened on a system with the font installed, it will be correctly rendered without any warning.

4.8 Linework with mixed (DeviceN) colors

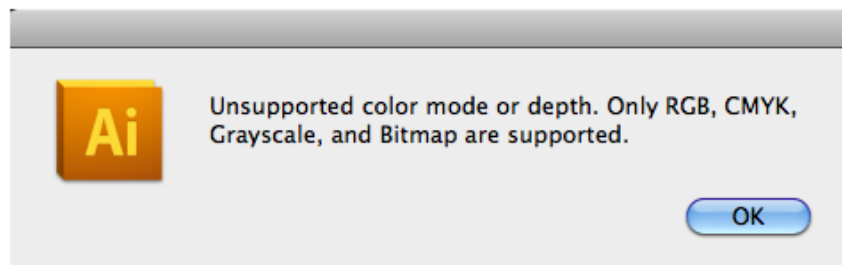
Adobe Illustrator does not support mixing multiple inks (combinations of multiple spot inks or process inks and a spot ink) in a single fill or stroke. Instead, they are simulated by multiple fills resp. strokes visible in the Appearance palette.

When PDF Import encounters a path object with a DeviceN fill or stroke, it is imported as multiple appearances with additional fills resp. strokes put into overprint. Such appearances are supported by boostX Ink Mix which can work with them further. However, the Ink Mix plug-in is not needed for this functionality of PDF Import.

4.9 Linked images

PDF Import supports links to external images. The links are preserved.

Some file formats for external images are supported in a (Normalized) PDF, but are not supported by Adobe Illustrator. For example multichannel PSD files can be placed in PackEdge or ArtPro, but it is not possible to open such Normalized PDF using this plugin because Adobe Illustrator does not support this variant of PSD. A workaround is to embed the PSD in PackEdge or ArtPro first. The following error is shown by Adobe Illustrator in such cases:



The **Image Extractor** plug-in is used for linked Esko CT/LP files. This is a free (non-licensed) functionality of Image Extractor.

Linked files with remapped inks are imported as Channel Mapped images. The visual representation will be correct, however a valid license for the Channel Mapping plug-in is needed to edit the channel mapping.

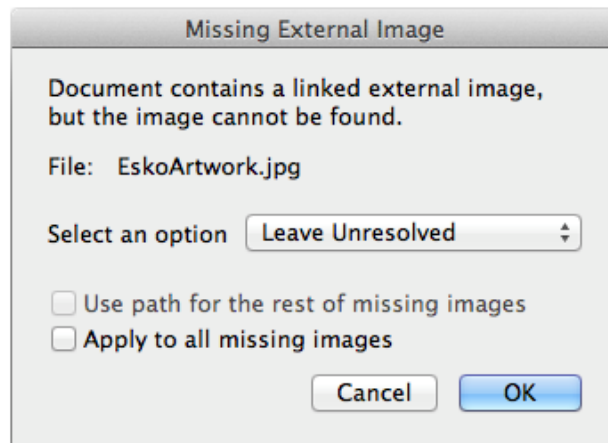
Adobe Illustrator has performance problems when a single document contains many linked rasters, or few linked files are referenced many times. It may sometimes cause that only Outline preview can be used. The PDF Import plug-in improves the handling of such documents.

Note:

This optimization works also for non-Normalized PDF files, including native Adobe Illustrator documents, but only as long as the PDF Import is installed.

4.9.1 Missing images

It sometimes happens that the referenced file is not found. Then the following dialog pops up:



There are 3 options:

- **Leave Unresolved** : Only a single-pixel placeholder is embedded.
The link to the original file is lost. The **Links** palette can be used to relink to the original file when it becomes available (or to any other file).
- **Use Embedded** : The image preview embedded in the PDF is used. Normalized PDF often contains a preview with a low resolution (up to 72 dpi). However, often there is just a single-pixel placeholder.
The link to the original file is lost. The **Links** palette can be used to relink to the original file when it becomes available (or to any other file).
- **Relink** : the standard file dialog opens, asking the user to find the missing linked file. When this option is selected, the **Use path for the rest of missing images** option becomes enabled.