

LinkEdge

User Guide

ESKO\*

# Contents

|                           |   |
|---------------------------|---|
| 1. Copyright Notice.....  | 3 |
| 2. LinkEdge Concepts..... | 5 |
| 3. Packing files.....     | 6 |
| 4. Unpacking files.....   | 7 |

# 1. Copyright Notice

---

© Copyright 2012 Esko Software BVBA, Gent, Belgium

All rights reserved. This material, information and instructions for use contained herein are the property of Esko Software BVBA. The material, information and instructions are provided on an AS IS basis without warranty of any kind. There are no warranties granted or extended by this document. Furthermore Esko Software BVBA does not warrant, guarantee or make any representations regarding the use, or the results of the use of the software or the information contained herein. Esko Software BVBA shall not be liable for any direct, indirect, consequential or incidental damages arising out of the use or inability to use the software or the information contained herein.

The information contained herein is subject to change without notice. Revisions may be issued from time to time to advise of such changes and/or additions.

No part of this document may be reproduced, stored in a data base or retrieval system, or published, in any form or in any way, electronically, mechanically, by print, photoprint, microfilm or any other means without prior written permission from Esko Software BVBA.

This document supersedes all previous dated versions.

PANTONE<sup>®</sup>, PantoneLIVE and other Pantone trademarks are the property of Pantone LLC. All other trademarks or registered trademarks are the property of their respective owners. Pantone is a wholly owned subsidiary of X-Rite, Incorporated. © Pantone LLC, 2012. All rights reserved.

This software is based in part on the work of the Independent JPEG Group.

Portions of this software are copyright © 1996-2002 The FreeType Project ([www.freetype.org](http://www.freetype.org)). All rights reserved.

Portions of this software are copyright 2006 Feeling Software, copyright 2005-2006 Autodesk Media Entertainment.

Portions of this software are copyright ©1998-2003 Daniel Veillard. All rights reserved.

Portions of this software are copyright ©1999-2006 The Botan Project. All rights reserved.

Part of the software embedded in this product is gSOAP software. Portions created by gSOAP are Copyright ©2001-2004 Robert A. van Engelen, Genivia inc. All rights reserved.

Portions of this software are copyright ©1998-2008 The OpenSSL Project and ©1995-1998 Eric Young ([eay@cryptsoft.com](mailto:eay@cryptsoft.com)). All rights reserved.

This product includes software developed by the Apache Software Foundation (<http://www.apache.org/>).

Adobe, the Adobe logo, Acrobat, the Acrobat logo, Adobe Creative Suite, Illustrator, InDesign, PDF, Photoshop, PostScript, XMP and the Powered by XMP logo are either registered trademarks or trademarks of Adobe Systems Incorporated in the United States and/or other countries.

Microsoft and the Microsoft logo are registered trademarks of Microsoft Corporation in the United States and other countries.

SolidWorks is a registered trademark of SolidWorks Corporation.

Portions of this software are owned by Spatial Corp. 1986 2003. All Rights Reserved.

JDF and the JDF logo are trademarks of the CIP4 Organisation. Copyright 2001 The International Cooperation for the Integration of Processes in Prepress, Press and Postpress (CIP4). All rights reserved.

The Esko software contains the RSA Data Security, Inc. MD5 Message-Digest Algorithm.

Java and all Java-based trademarks and logos are trademarks or registered trademarks of Sun Microsystems in the U.S. and other countries.

Part of this software uses technology by Best™ Color Technology (EFI). EFI and Bestcolor are registered trademarks of Electronics For Imaging GmbH in the U.S. Patent and Trademark Office.

Contains PowerNest library Copyrighted and Licensed by Alma, 2005 – 2007.

All other product names are trademarks or registered trademarks of their respective owners.

Correspondence regarding this publication should be forwarded to:

Esko Software BVBA

Kortrijksesteenweg 1095

B – 9051 Gent

info.eur@esko.com

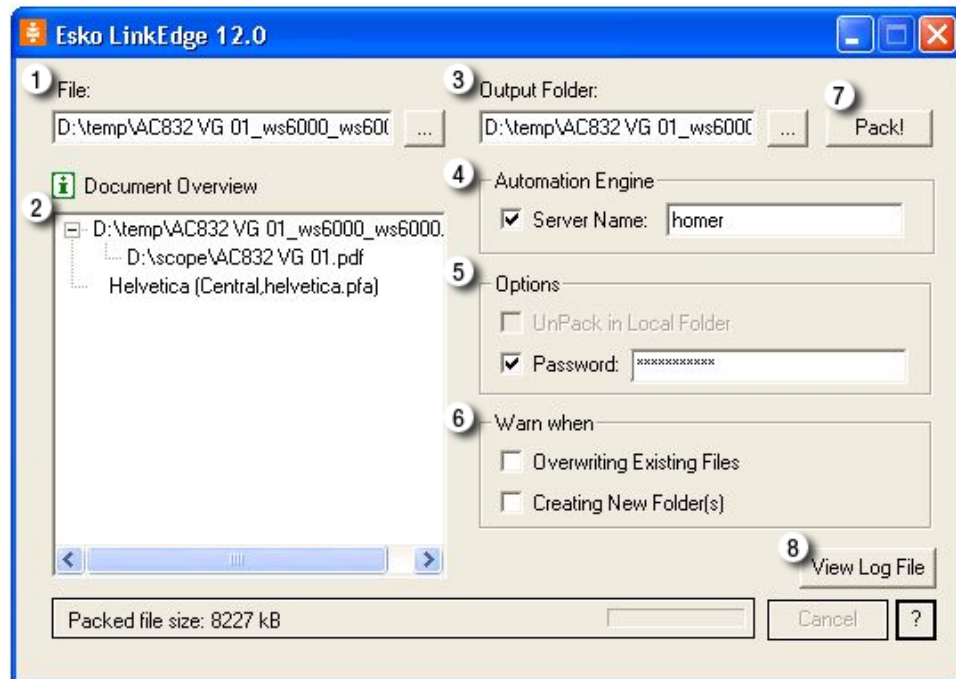
## 2. LinkEdge Concepts

---

LinkEdge helps you to collect all the files and fonts related to your job created in the Esko application. Once all files and fonts are collected, Linkedge bundles them, with your job, into one file. This makes archiving easier. LinkEdge also provides you connectivity to other sites working with a Esko application.

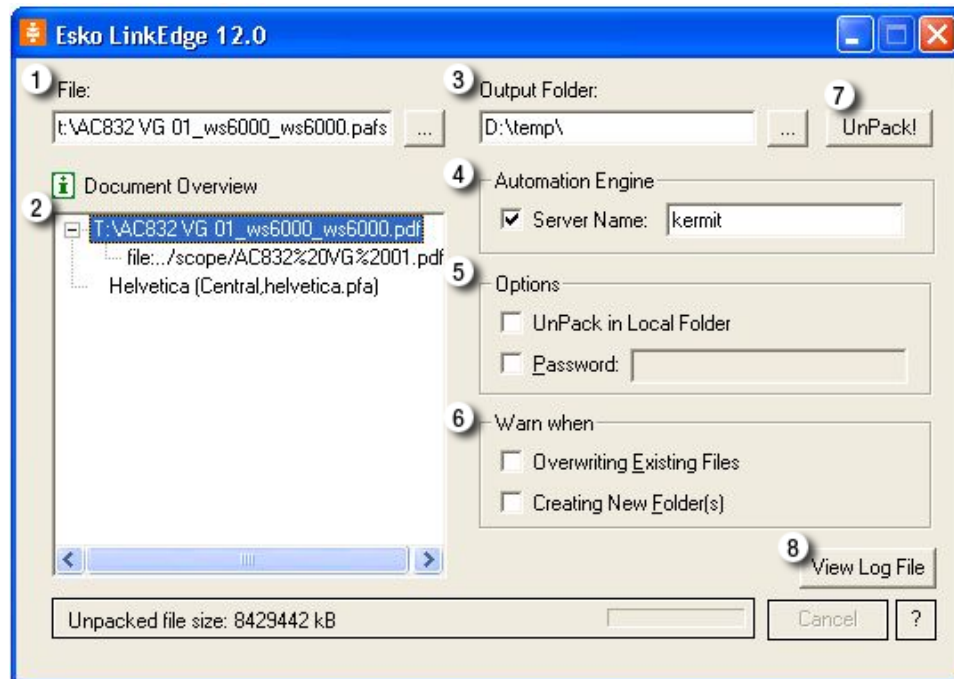
GRS, STA and PLA files will be packed into a .PAF file. PDF, PDFSTA, PDFPLA files will be packed into a .PAFSC file.

## 3. Packing files



1. **File:** Select a file to pack (enter the path or browse).
2. **Document Overview:** The selected file and its referenced files are listed here.
3. **Output Folder:** Define the output directory, enter a path or browse.
4. **Automation Engine:** If this option is enabled and an Automation Engine is set, LinkEdge will use the font data from this AE server. If disabled, LinkEdge will use the font data from the local workstation.
5. **Options:** Password: Enter a password, you will be prompted to enter it again when you want to pack the files (it will also be necessary to enter the password when unpacking files.)
6. **Warn when:**
  - **Overwriting Existing files:** If files with the same name already exist, a warning will inform you.
  - **Creating New Directory:** a warning will be displayed to inform you that (a) new directory / directories will be created.
7. **Pack!:** Hit this button to pack the selected file.
8. **View Log File:** The LinkEdge log file lists relevant information about the selected file and its references. You can save this log file.

## 4. Unpacking files



1. **File:** Select a file to unpack (enter the path or browse).
2. **Document Overview:** The contents of the packed file are listed here..
3. **Output Folder:** Define the output directory, enter a path or browse.
4. **Automation Engine:** If this option is enabled and an Automation Engine is set, LinkEdge will use the font data from this AE server. If disabled, LinkEdge will use the font data from the local workstation.
5. **Options:**
  - **Unpack in local directory:** when selected all files will be unpacked in the selected output directory. When you deselect the toggle, the original directory structure will be created.
  - **Password:** Enter the password.
6. **Warn when:**
  - **Overwriting Existing files:** If files with the same name already exist, a warning will inform you.
  - **Creating New Directory:** a warning will be displayed to inform you that (a) new directory / directories will be created.
7. **Unpack!:** Hit this button to unpack the selected file.
8. **View Log File:** The LinkEdge log file lists relevant information about the selected packed file and its references. You can save this log file.