

# HOTFOLDER+ 12.1



## USER MANUAL

28.03.2013

ESKO\*

© Copyright 2013

Esko-Graphics Imaging GmbH, 25524 Itzehoe, Germany

All rights reserved. This document and the information and instructions contained therein is the property of Esko-Graphics. These documents contain the product descriptions according to their current state at the time of publication, subject to confirmation. No guarantees are granted or expanded upon by this document. Furthermore, Esko-Graphics will not guarantee for illustrations relating to the usage of the products or for results from using the software or the use of the information contained herein. Esko-Graphics is not responsible for direct or indirect damages or damages caused as logical consequence or latent damages resulting from the use of the software or from the impossibility of using the software or of the information contained herein.

The technical data contained herein and the content of this manual is subject to change without prior notification. Revisions may be issued from time to time that inform of such changes and/or supplements.

No part of this document may be reproduced, transferred, electronically stored or published, irrespective of the reasons without written permission and irrespective of the method or means used, i. e., electronic, mechanical, by printing, microfiche, etc.

These documents replace all previous versions.

Grapholas® is a registered trademark of Esko-Graphics Imaging GmbH.

Cyrel®, Cyrel® Digital Imaging System and Cyrel® Digital Imager (CDI) are registered trademarks of DuPont.

Microsoft and the Microsoft Logo are registered trademarks of Microsoft Corporation in the USA and other countries.

The software from Esko-Graphics may contain the "RSA Data Security, Inc. MD5 Message-Digest Algorithm".

JDF and the JDF Logo are trademarks of the CIP4-Organisation. Copyright 2001 The International Cooperation for the Integration of Processes in Prepress, Press and Postpress (CIP4). All rights reserved.

Java and all Java-based trademarks and logos are trademarks or registered trademarks of Sun Microsystems in the U.S. and/or other countries.

Some parts of this software use technologies of JGoodies, Barbecue (Copyright 2003, International Barcode Consortium), and Jakarta (licensed by Apache: [www.apache.org/licenses/LICENSE-2.0.txt](http://www.apache.org/licenses/LICENSE-2.0.txt)).

All other product names are trademarks or registered trademarks of their respective owners.

# TABLE OF CONTENTS

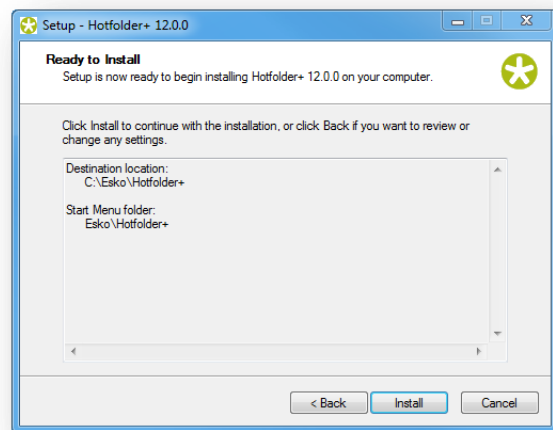
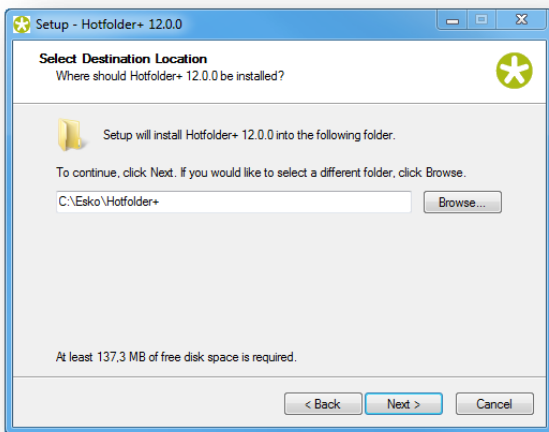
- 1    INSTALLATION.....4**
- 1.1    ENTERING THE LICENSE KEY ..... 4
- 2    SETTING UP THE "HOTFOLDER+" PROGRAM .....5**
- 2.1    CREATING NEW HOTFOLDERS .....5
- 2.2    DELETING HOTFOLDERS .....6
- 2.3    MODIFYING HOTFOLDERS .....6
- 2.4    COPYING HOTFOLDERS .....6
- 2.5    POSSIBLE ACTIONS PROVIDED BY "HOTFOLDER+" .....7

## 1 Installation

The installation must be carried out as administrator on the local computer (not domain). User rights are usually restricted when logged on to a domain.

After inserting the CD, the start screen is automatically displayed. If the start screen is not displayed, then start the "**setup.exe**" file in the root directory of the CD.

The installation starts with a selection of the installation directory and the dialog language.



### 1.1 Entering the License Key

The "Hotfolder+" program requires an extra license. After starting the "New License" licensing program under "Esko – Hotfolder+ – System" in the Windows Start Menu, the product ID is displayed.



ESKO provides a serial number for this "ProductID" which needs to be entered in the "Serial Number" field and confirmed by ENTER.

After restarting the computer, the "Hotfolder+" program can be started.

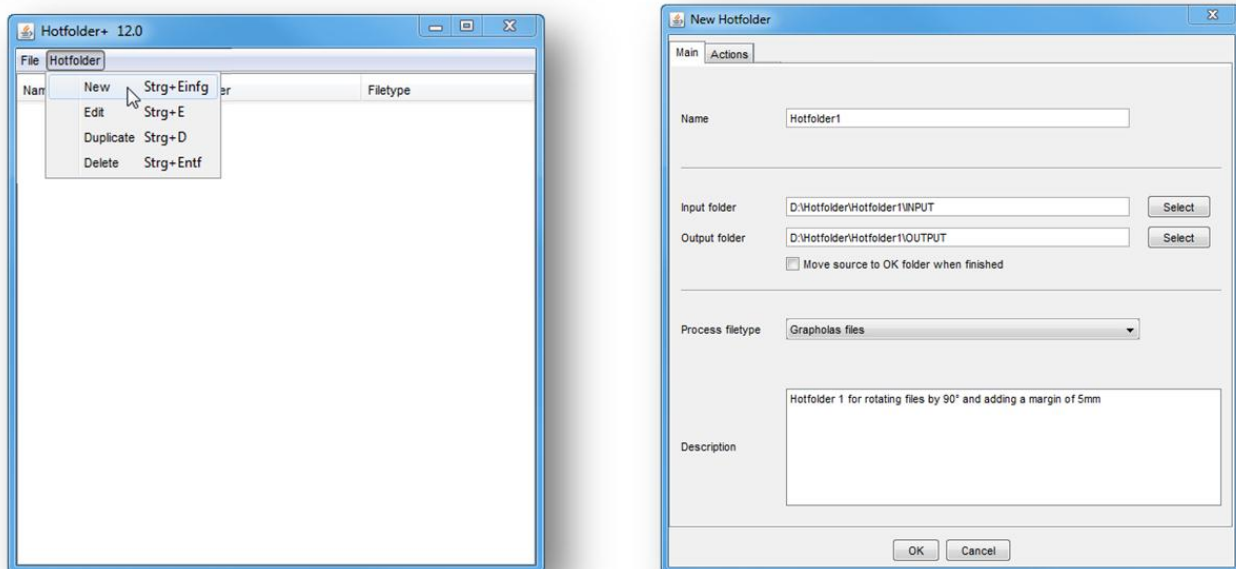
## 2 Setting up the "Hotfolder+" Program

The "Hotfolder+" program can be used to modify LEN and TIF files (for example, rotating, mirroring, etc.). You can set up more than one Hotfolder with different output directories.

In the Windows Start Menu, the "Hotfolder config" program can be started under "ESKO – DFS Server". This program is used to create, change or delete Hotfolders. Once the new settings have been saved, they are automatically applied by the "Hotfolder+" program.

### 2.1 Creating New Hotfolders

The "Hotfolder – New" menu item opens a new window where the parameters can be set.



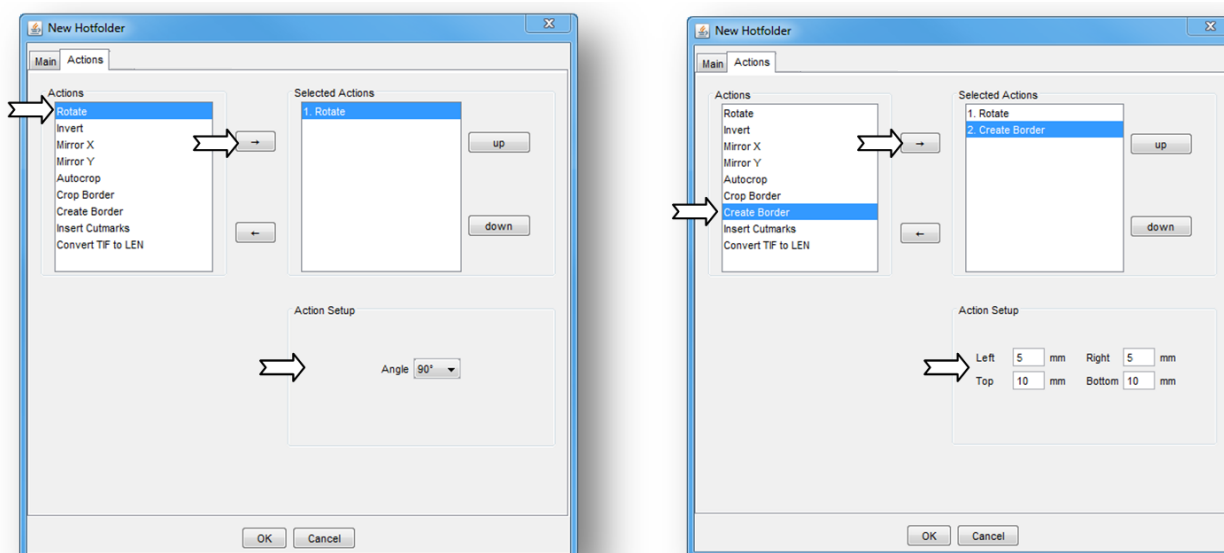
For each Hotfolder, a name must be entered in the "Name" field. Spaces and special characters cannot be entered.

The "Input folder" with the original files and the "Output folder" must not be identical. If the original files are to be moved to the "OK" subfolder, the "Move source to OK folder when finished" option needs to be activated.

If only LEN files or only TIF files are to be processed, this can be set under "Process file type".

The "Description" field optionally contains a description of this Hotfolder.

In the "Actions" section, the actions for this Hotfolder can be set. The left list of "Actions" lists all available actions. By clicking on the right arrow button, the selected action is lined up on the right. For the action selected on the right, the parameters can be set under "Action Setup" below:



In this case, the file is rotated by 90° first and then a frame is added to the left and the right (5 mm) as well as to the top and the bottom (10 mm) of the file.

All actions are processed in the order shown on the right. Use the "up" and "down" buttons to move the selected action upwards or downwards.

Press the "OK" button to accept the settings which can then be saved using the "File - Save" menu item.

## 2.2 Deleting Hotfolders

Use the "Hotfolder – Delete" menu item to delete the selected Hotfolder.

## 2.3 Modifying Hotfolders

Double-clicking onto the Hotfolder opens the window where the actions can be set.

## 2.4 Copying Hotfolders

Use the "Hotfolder – Duplicate" menu item to copy the selected Hotfolder which is then receiving the name "Copy of ...".

Before saving the Hotfolder, the output directories must be changed.

## 2.5 Possible Actions Provided by "Hotfolder+"

- "Rotate": Allows to rotate files by 90°, 180° and 270°.
- "Invert": Allows to invert the colour mask (black -> white / white -> black).
- "Mirror X": Allows to mirror the file vertically.
- "Mirror Y": Allows to mirror the file horizontally.
- "Autocrop": Allows automatic cropping. If "Background color is" is set to "White", the black pixels are considered to be the image content. "Black" is to be set for "Film".
- "Crop Border": Allows customised cutting of the image for each side.
- "Create Border": Allows customised enlargement of the image for each side.
- "Insert Cutmarks": Allows to insert cut marks (in the corners of each side of the image). "Border width" can be used to set the distance between border and image.
- "Convert TIF to Len": Converts a TIF file into a LEN file. This action can only be inserted at the end of the actions.